

rapid space

ELEVATE YOUR BUSINESS-ADD RAPID SPACE MODULES
TO YOUR EQUIPMENT HIRE FLEET



Rapid Space is an asset for every equipment hire company involved in the construction or events industries as it completes your range of services.

Rapid Space modules provides a rapid and easy solution when extra space is required, whether it is site offices, meeting rooms, first aid centers, promotional & marketing offices, classrooms and accommodation – in fact everywhere that rapid space is required.

They can be multiplexed to form large areas or can be stacked ground plus two floors making them adaptable for most situations and optimizing space.

Rapid Space modules are certified by Intertek USA as being one-hour resistant to fire for the chassis/floor element, roof/ceiling element, wall panels and doors.

Rapid Space modules are easy to handle and can be moved and located by boom truck using the four corner lifting eyes, or transported by a flatbed trailer with a forklift using the forklift sleeves which are part of the chassis. The Rapid Space units comply with most road regulations as they are ISO container size. Rapid Space units can be placed directly on hard surfaces, on concrete blocks or using adjustable foot pads.

Rapid Space Ablution modules are fitted with a central floor drain to control the spread of surface water. Wastewater tanks are fitted underneath the units with a holding capacity of 5,500 liters and a potable water tank is fitted on the roof with a capacity of 6,000 liters. Cubicle partitions are HPL with nylon feet and accessories.

Module Size

External length / Internal length...6.055m / 5.875m
 External width / Internal width.....2.435m / 2.255m
 External height / Internal height...2.591m / 2.320m

Shipping & Delivery

The standard 6-meter modules come as one flatpack containing all the components and accessories including all the electrical materials. The flat packs are shipped as bundle forming a twenty-foot container, which in turn is carried by the standard container shipping lines. Delivery from the port of discharge is convenient as the flatpack bundle is loaded on to a trailer for delivery to the clients premises.

Installation

Installation is very fast for a single 6-meter module and all deliveries come with an installation video, method statement and check list.



Fire rating Certificates

intertek
Total Quality Assured.



Certificate of Compliance

You have been awarded:
ETL Listed Mark for Wall Assemblies
Standards: BS 476 Part 22 (1987)

Certificate number: WHI20-35092401

Organization: Ark Modular Building Manufacturing Co., Ltd.
Building 4, No. 288 Fengyong Road
Fengxian District
Shanghai 201400
China

Product: Ark Modular Building Manufacturing - 100mm thick Mineral Wool Sandwich Panel
Spec ID: 56307
Fire Rating: 60 Minute Fire Rated
Listing Information: See following page(s)

Certification body: Intertek Testing Services NA, Inc.
Initial registration: August 4, 2020
Date of expiry: August 4, 2025
Issue status: 1

Authorized By:

Jean-Philippe Kayl, Director of Certification
Intertek Testing Services NA, Inc.
545 E. Algonquin Road, Ste H, Arlington Heights, IL 60005 USA
Phone: 847-439-5667 Fax: 847-439-7320

www.intertek.com

The certificate and schedule are held in force by regular annual surveillance visits by Intertek Testing Services NA, Inc. and the holder in user should contact Intertek to update its status. This certificate remains the property of Intertek Testing Services NA, Inc. and must be returned to them on demand. This Certificate is for the exclusive use of Intertek's Client and is provided pursuant to the Certification Agreement between Intertek and its Client. Intertek's responsibility and liability are limited to the terms and conditions of the agreement. Intertek assumes no liability to any party other than the Client in connection with the agreement, for any loss, expense or damage whatsoever by the use of this certificate. Only the Client is authorized to permit copying or distribution of this certificate and then only in its entirety. Use of Intertek's Certification mark is restricted to the conditions laid out in the agreement. Any further use of the Intertek name for the sale or advertisement of the listed material, product or service must first be approved in writing by Intertek. Initial Factory Assessments and Follow-up Services are for the purpose of assuring appropriate usage of the Certification mark in accordance with the agreement. They are not for the purpose of production quality control and do not release the Client of their obligations in this respect.

SpecDIRECT™ powered by intertek

LISTING INFORMATION

Ark Modular Building Manufacturing mineral wool sandwich panel is a 100 mm thick wall panel made of approximately 100 mm thick rock wool core covered on both sides with galvanized steel sheet with a thickness of 0.45mm and smooth surface. The galvanized steel sheets are bonded to the rock wool core by adhesive.

FIRE RATINGS

Test Standard	Rating	Design Number
BS 476-22:1987	Fire resistance rating: 1 Hour non-Loadbearing	AMB/CWP 60-01

intertek
Total Quality Assured.



Certificate of Compliance

You have been awarded:
ETL Listed Mark for Roof/Ceiling, Floor/Ceiling, Beam & Column Assemblies
Standards: BS 476 Part 20 (1987), BS 476 Part 21 (1987)

Certificate number: WHI21-35092402

Organization: Ark Modular Building Manufacturing Co., Ltd.
Building 4, No. 288 Fengyong Road
Fengxian District
Shanghai 201400
China

Product: Ark Modular Building - Floor-Ceiling System
Spec ID: 63273
Fire Rating: 60 Minute Fire Rated
Listing Information: See following page(s)

Certification body: Intertek Testing Services NA, Inc.
Initial registration: August 5, 2021
Date of expiry: August 5, 2026
Issue status: 1

Authorized By:

Jean-Philippe Kayl, Director of Certification
Intertek Testing Services NA, Inc.
545 E. Algonquin Road, Ste H, Arlington Heights, IL 60005 USA
Phone: 847-439-5667 Fax: 847-439-7320

www.intertek.com

The certificate and schedule are held in force by regular annual surveillance visits by Intertek Testing Services NA, Inc. and the holder in user should contact Intertek to update its status. This certificate remains the property of Intertek Testing Services NA, Inc. and must be returned to them on demand. This Certificate is for the exclusive use of Intertek's Client and is provided pursuant to the Certification Agreement between Intertek and its Client. Intertek's responsibility and liability are limited to the terms and conditions of the agreement. Intertek assumes no liability to any party other than the Client in connection with the agreement, for any loss, expense or damage whatsoever by the use of this certificate. Only the Client is authorized to permit copying or distribution of this certificate and then only in its entirety. Use of Intertek's Certification mark is restricted to the conditions laid out in the agreement. Any further use of the Intertek name for the sale or advertisement of the listed material, product or service must first be approved in writing by Intertek. Initial Factory Assessments and Follow-up Services are for the purpose of assuring appropriate usage of the Certification mark in accordance with the agreement. They are not for the purpose of production quality control and do not release the Client of their obligations in this respect.

SpecDIRECT™ powered by intertek

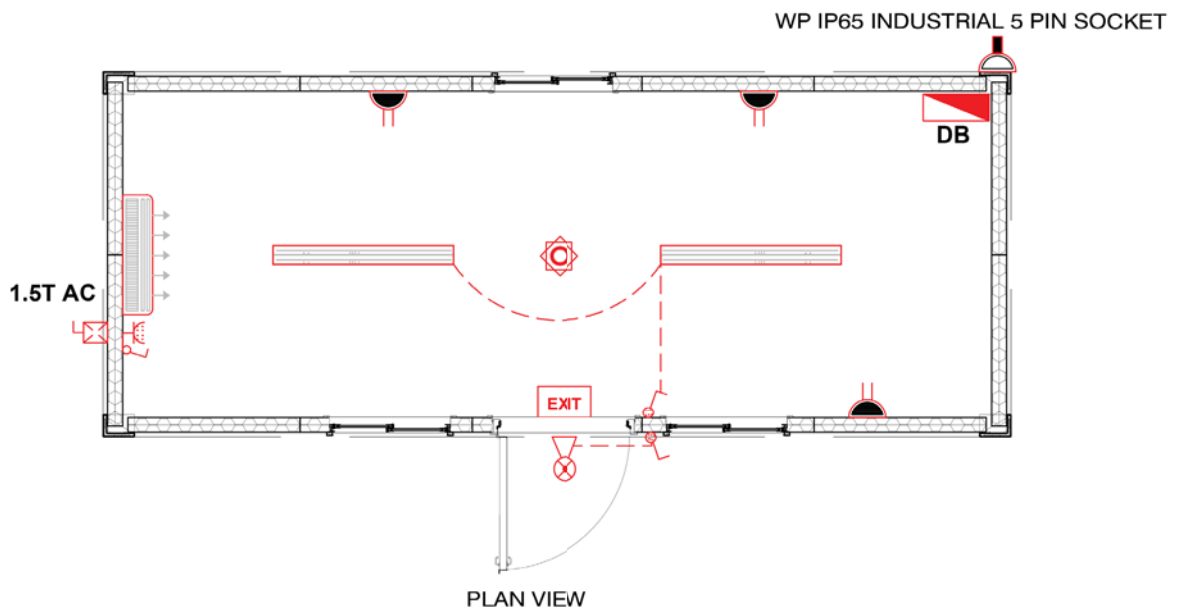
LISTING INFORMATION

Ark Modular Building Manufacturing Floor-Ceiling system is horizontal separation of modular building with an overall size of 4000 mm Long by 2435 mm high by 340 mm thick. It is a floor-ceiling system consists of the upper floor part and lower ceiling part connected by Hexagon socket bolts passing through two linking plates at each corner.

FIRE RATINGS

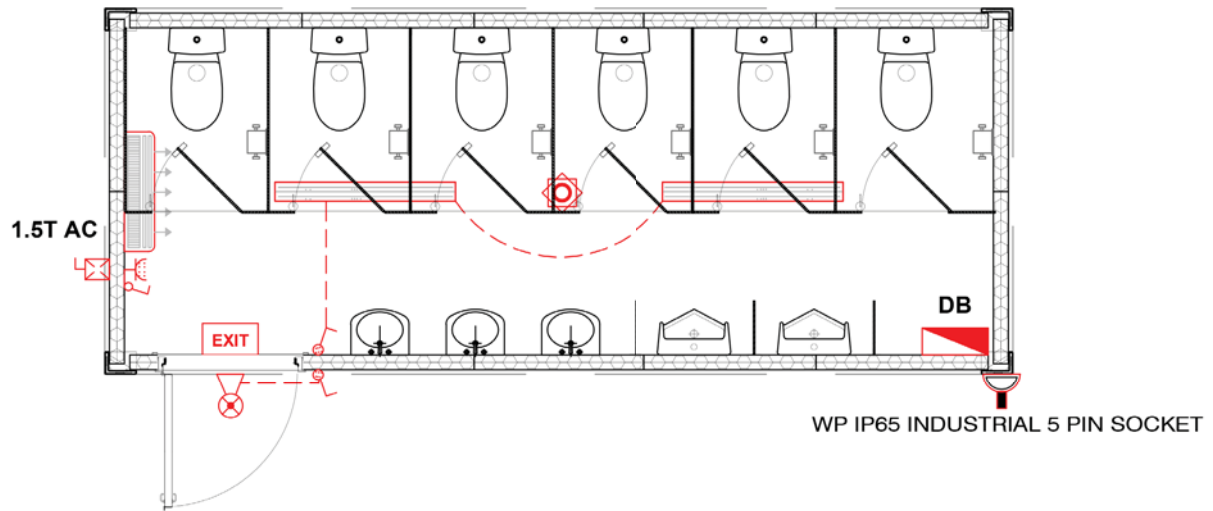
Test Standard	Rating	Design Number
BS 476-21	One Hour Loadbearing (3.5 KN/m ² uniformly distributed load)	AMB/FRPA 60-01

Note: This fire rating is valid with the Floor-ceiling system simply supported at four corners with a span of 3812 mm in longitudinal direction and a span of 2362 mm in transversal.

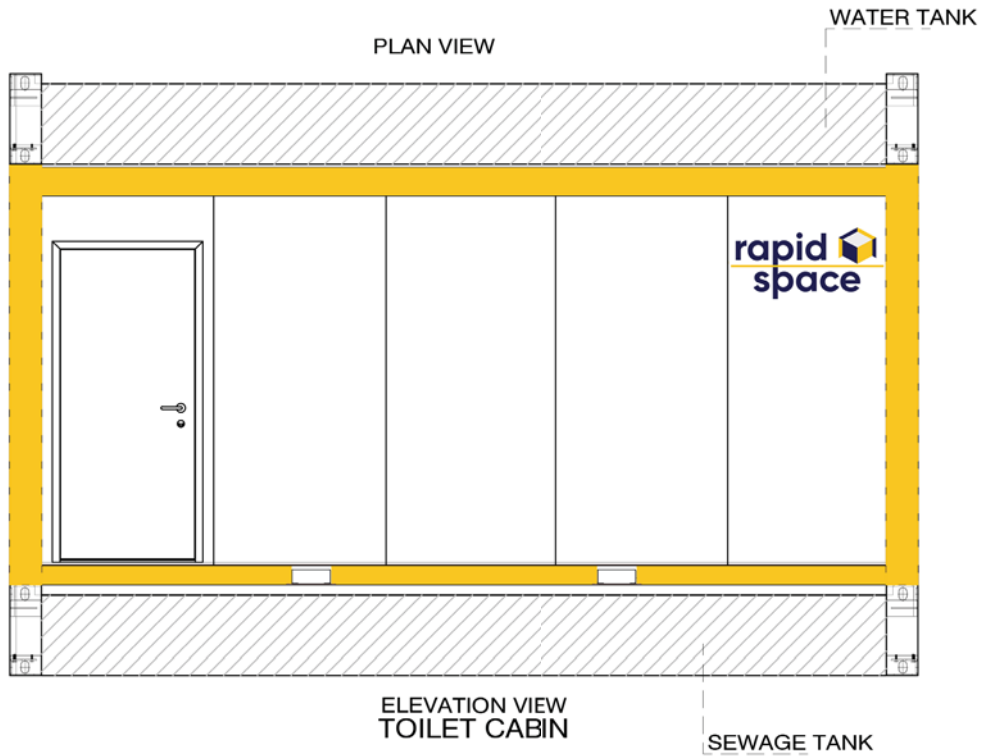


Electrical Installation Details:

1. DB Main connection plug for out side Female wall mounted w/p IP 65 industrial 5 pin socket type.
2. 3C x 6SQMM FLEXIBLE CABLE for AC, 3C x 4SQMM FLEXIBLE CABLE for Power Socket, 3C x 2.5SQMM FLEXIBLE CABLE for Lights.
3. Protection: 40A 4 Poll ELCB with 40A 4 Poll TP isolator for DB incoming breaker.
4. Suitable power: DB outgoing breakers 10A single poll MCB for lights, 20A single poll RCCB for power sockets, 32A single poll MCB for AC.



PLAN VIEW



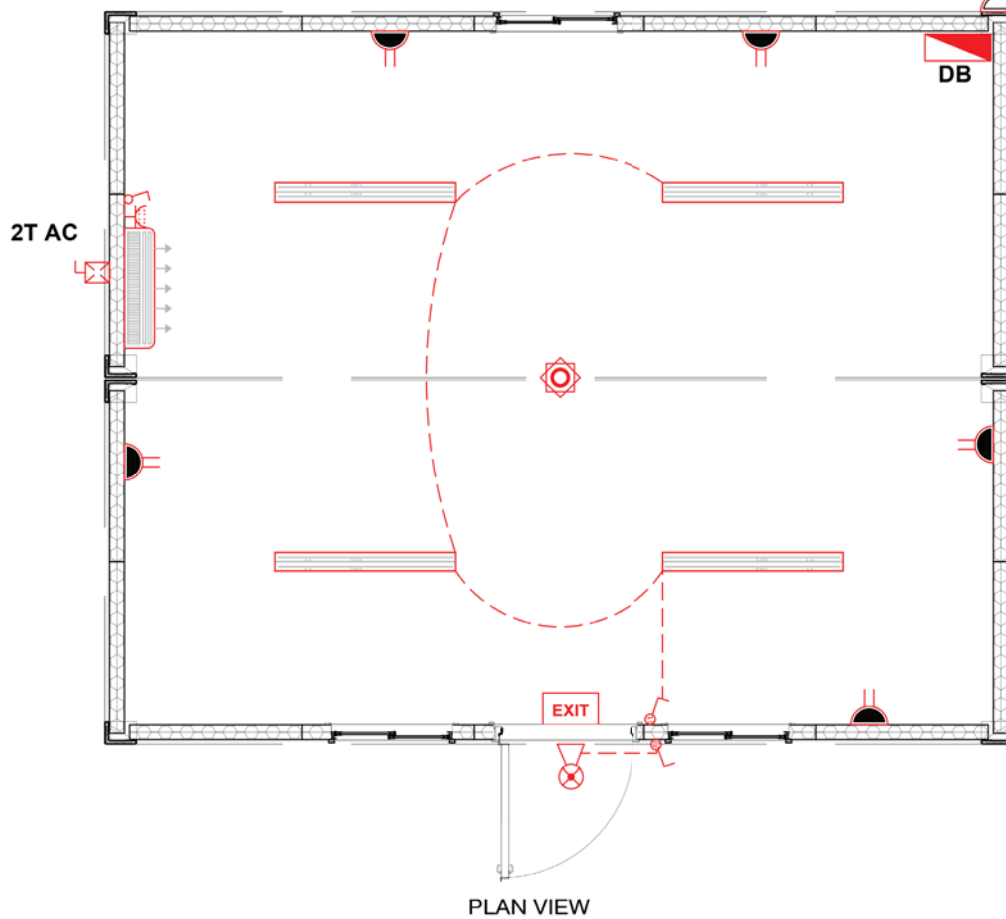
ELEVATION VIEW
TOILET CABIN

Electrical Installation Details:

1. DB Main connection plug for out side Female wall mounted w/p IP 65 industrial 5 pin socket type.
2. 3C x 6SQMM FLEXIBLE CABLE for AC, 3C x 4SQMM FLEXIBLE CABLE for Power Socket, 3C x 2.5SQMM FLEXIBLE CABLE for Lights.
3. Protection: 40A 4 Pole ELCB with 40A 4 Pole TP isolator for DB incoming breaker.
4. Suitable power: DB outgoing breakers 10A single pole MCB for lights, 20A single pole RCCB for power sockets, 32A single pole MCB for AC.



WP IP65 INDUSTRIAL 5 PIN SOCKET



PLAN VIEW

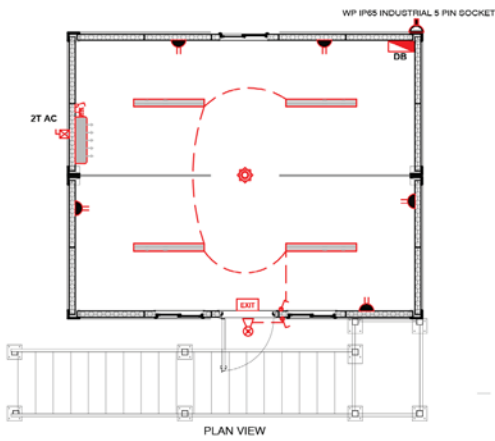
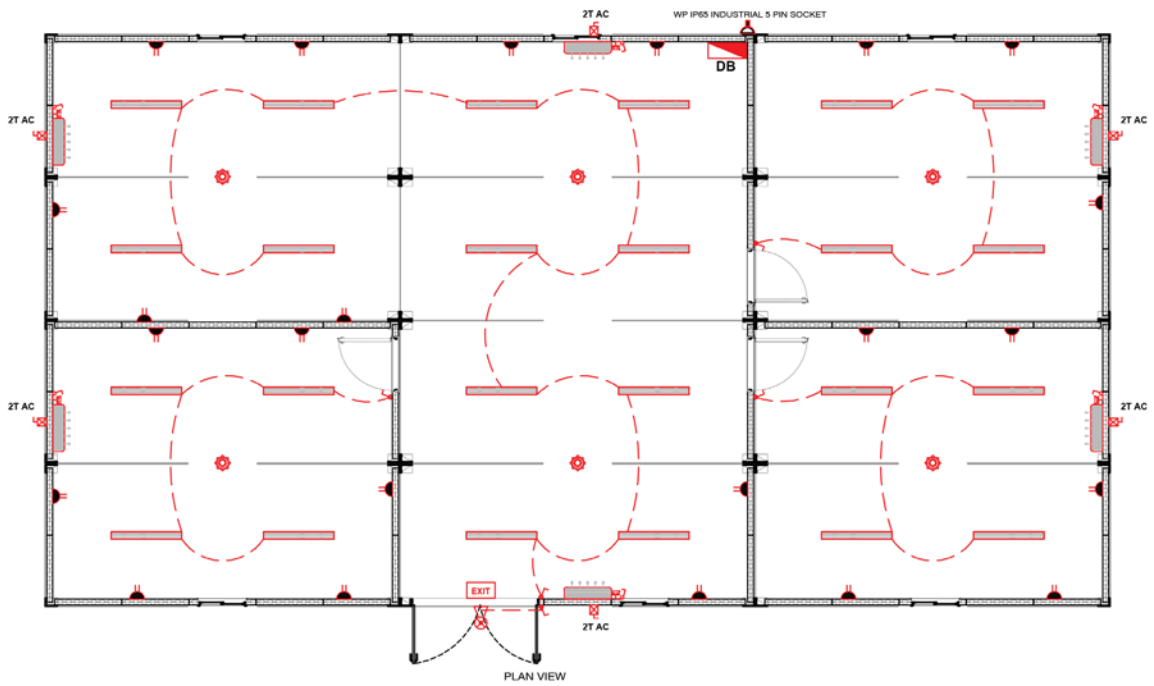


ELEVATION VIEW
OFFICE CABIN

Electrical Installation Details:

1. DB Main connection plug for out side Female wall mounted w/p IP 65 industrial 5 pin socket type.
2. 3C x 6SQMM FLEXIBLE CABLE for AC, 3C x 4SQMM FLEXIBLE CABLE for Power Socket, 3C x 2.5SQMM FLEXIBLE CABLE for Lights.
3. Protection: 40A 4 Poll ELCB with 40A 4 Poll TP isolator for DB incoming breaker.
4. Suitable power: DB outgoing breakers 10A single poll MCB for lights, 20A single poll RCCB for power sockets, 32A single poll MCB for AC.





OFFICE CABIN G+1 MULTIPLEXED



CONTACT US

Head Office

Address: RM.701,Block A No.581 Xiuchuan Road
Pudong, Shanghai, China
Phone: +86 21 60838082
Fax: +86 21 6083 8081
Email: info@arkprefab.com

ARK Prefab International

P.O. Box 16176
Doha, Qatar
Phone: +974 44696823 / 30305662
Email: arkme@arkprefab.com

